

Dar es Salaam - Reality Check Workshop - hosted by GIZ and Dar es Salaam City Council

Settlements and Population located in Flood-prone Areas of Dar es Salaam: Local Challenges and Experiences with Adaptation and Risk Management



Dionis Rugai
Disaster Management Training Centre and
Department of Environmental Science and Management
Ardhi University, Dar es Salaam, Tanzania

Background

- Major factors that contribute to Flood Risk accumulation include:-
 - Unsafe settlement and construction practices, policies and behaviours
 - Impacts partly attributable to growing urban populations(from 2,487,288 in year 2002 to 4,364,541 in year 2012
 - changing settlement patterns and
 - climate variability

Flood in Dar es Salaam

MSIMBAZI VALLEY



JANGWANI

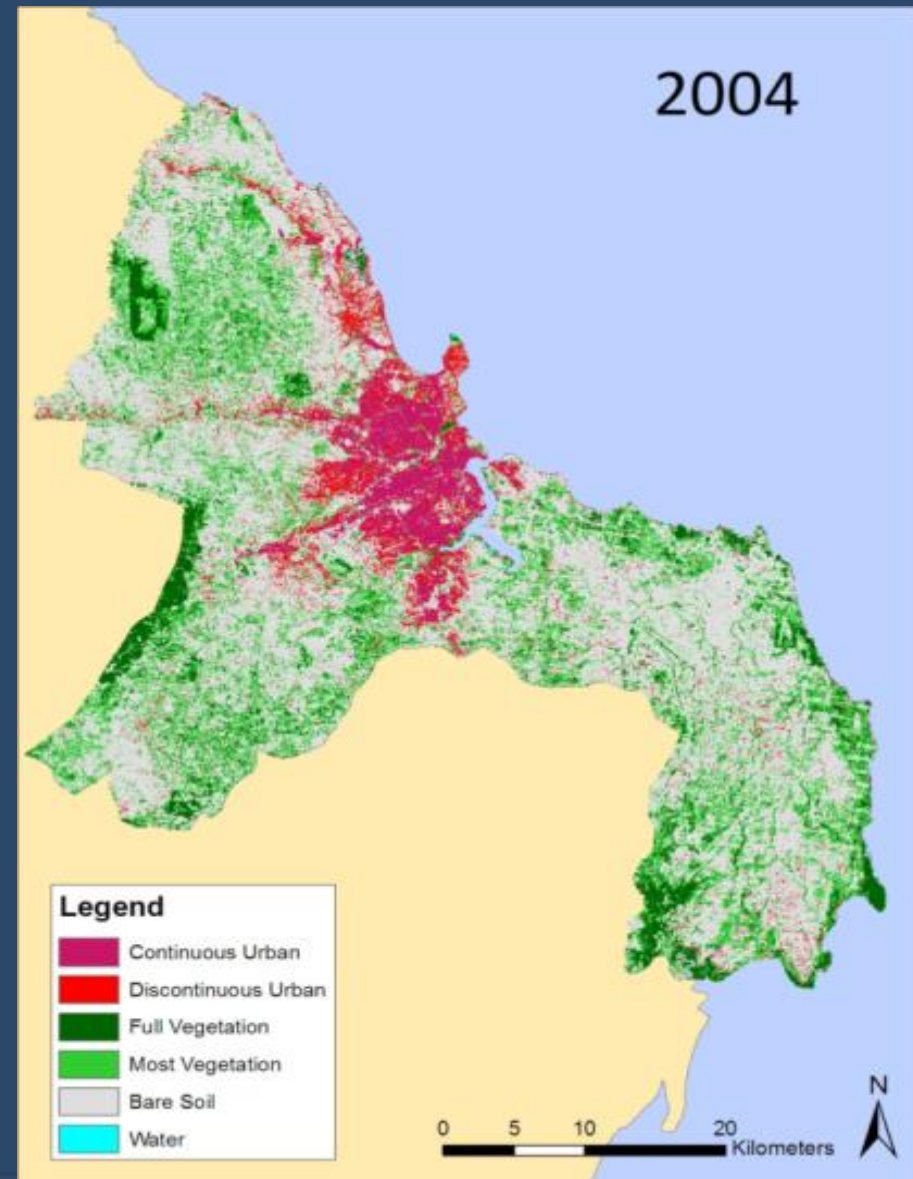
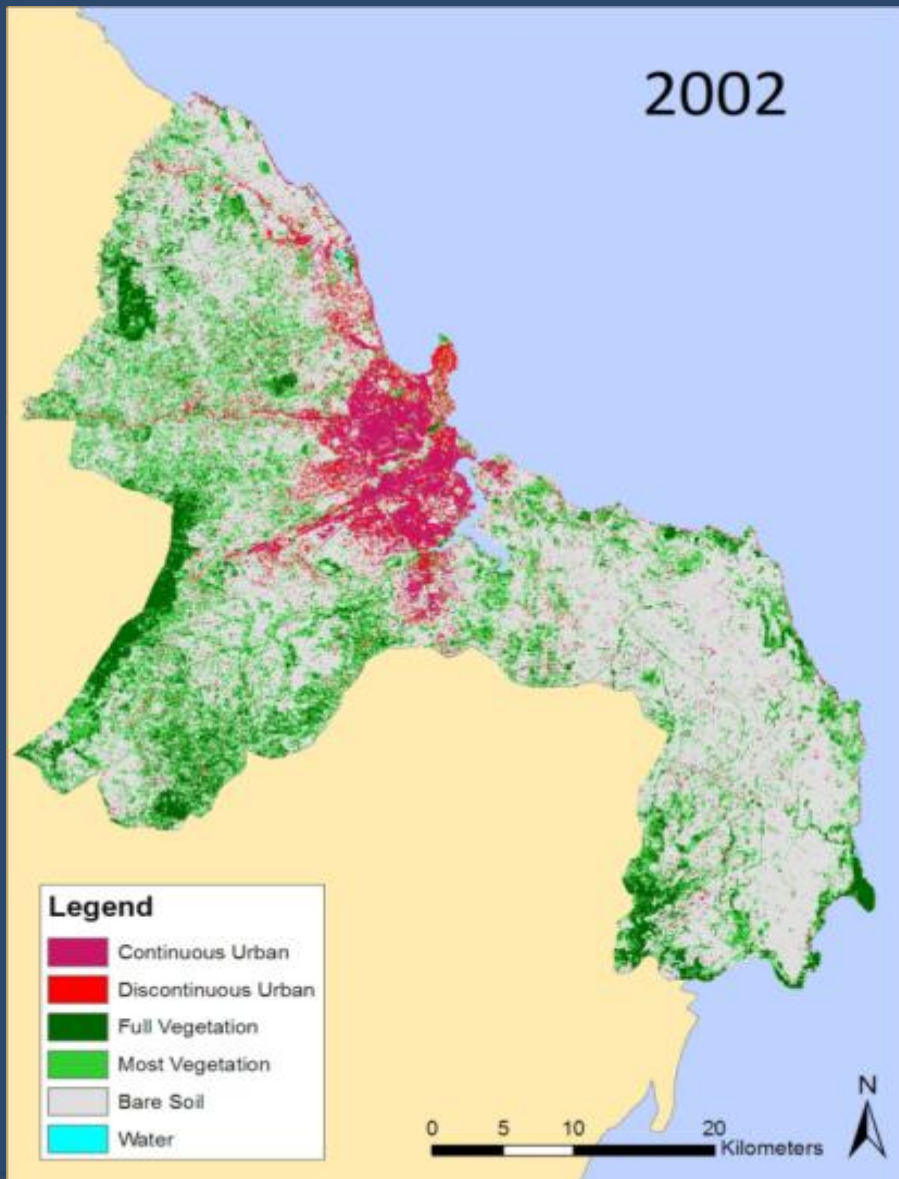


SETTLEMENT IN LOW LYING AREAS

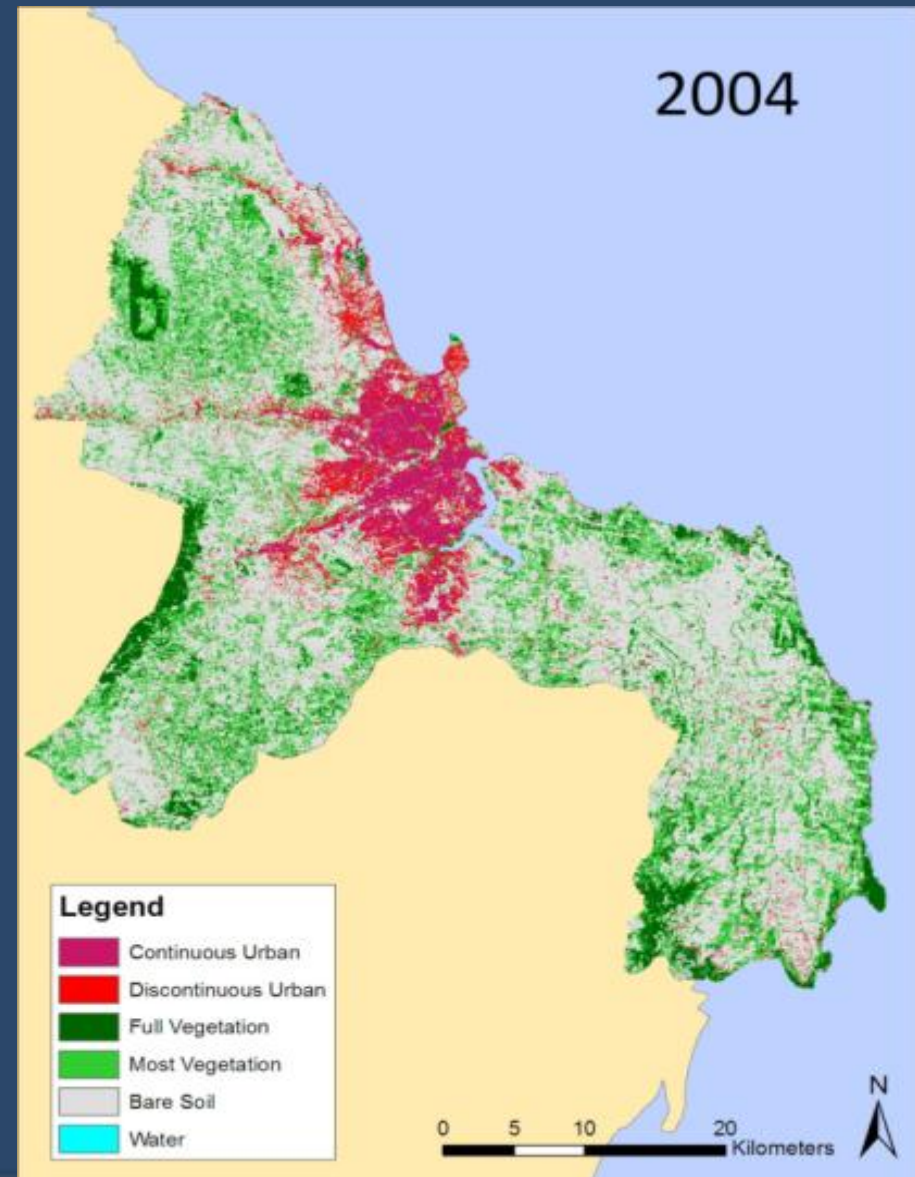
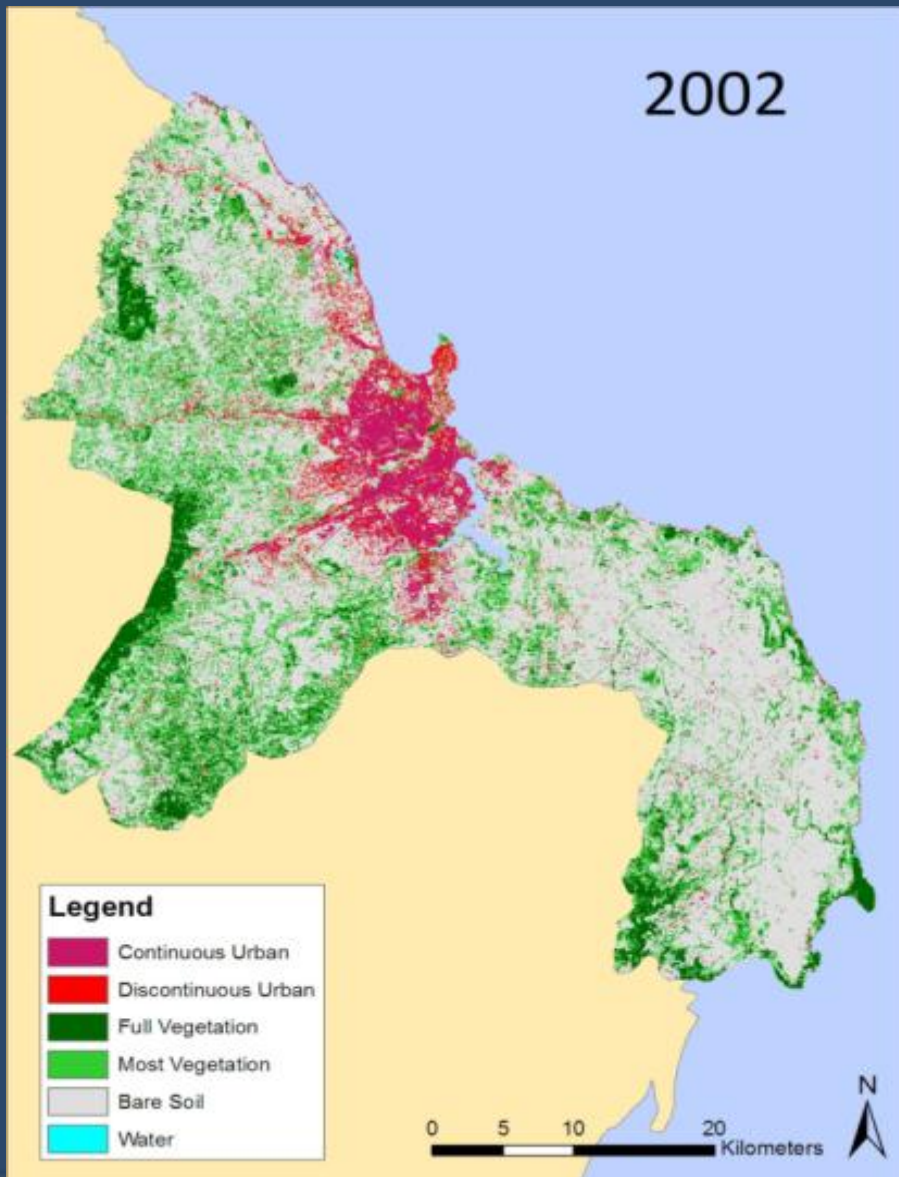
Poor Drainage Systems



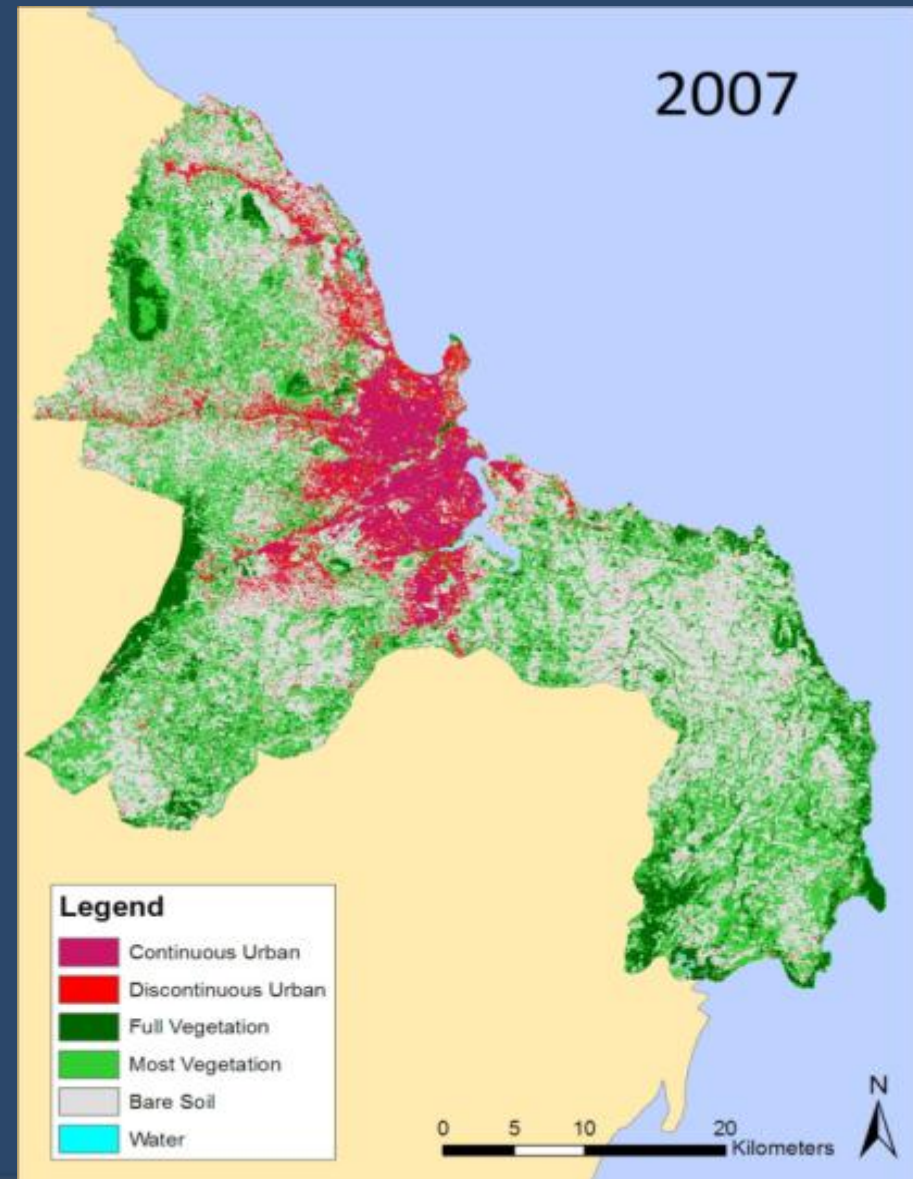
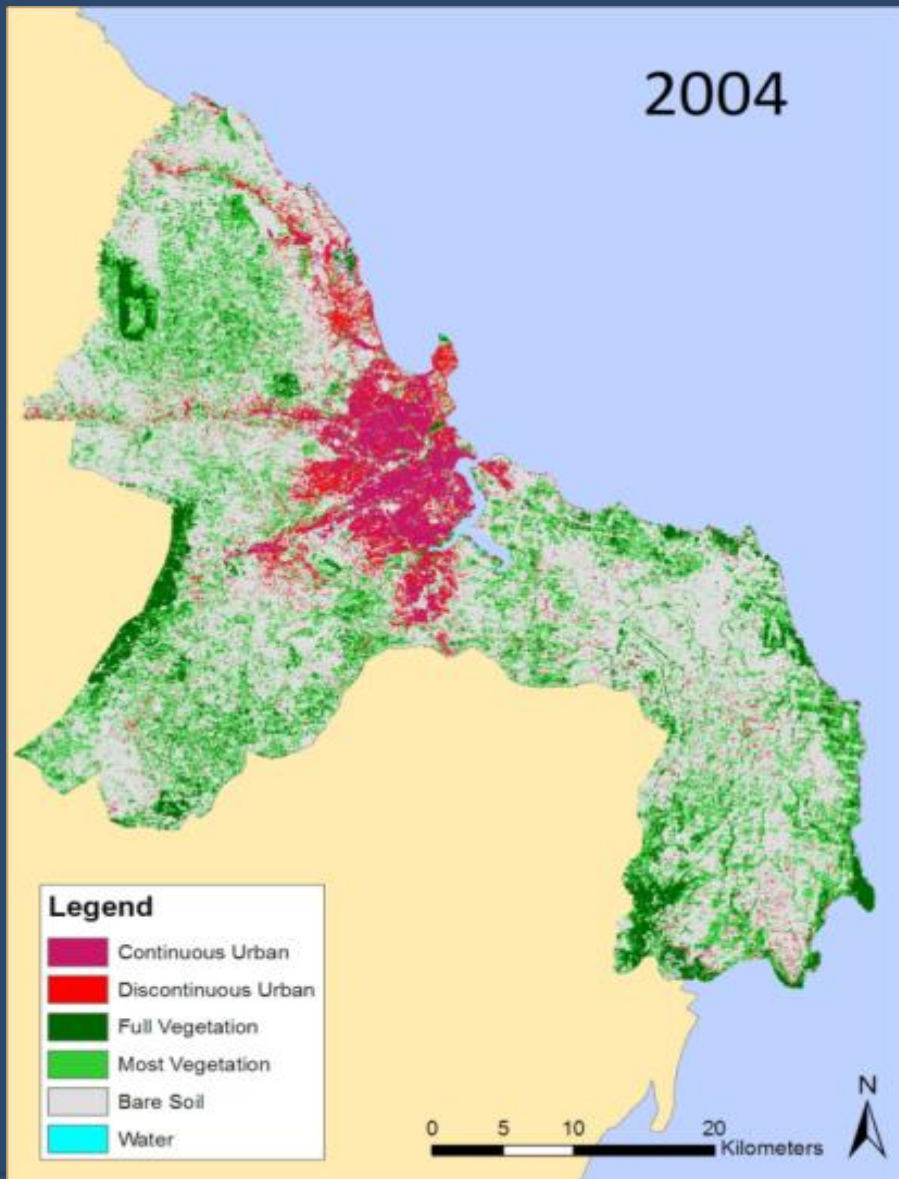
Temporal Land Cover Change



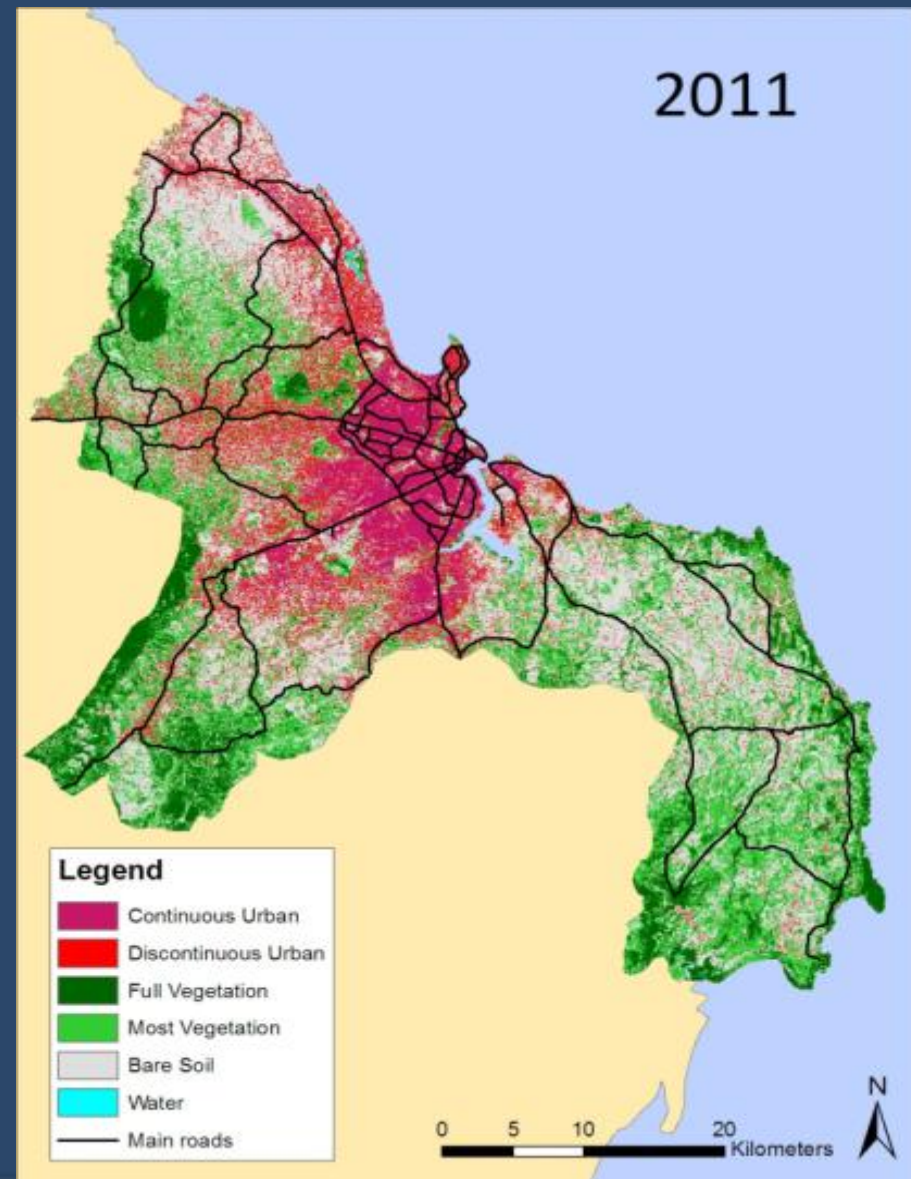
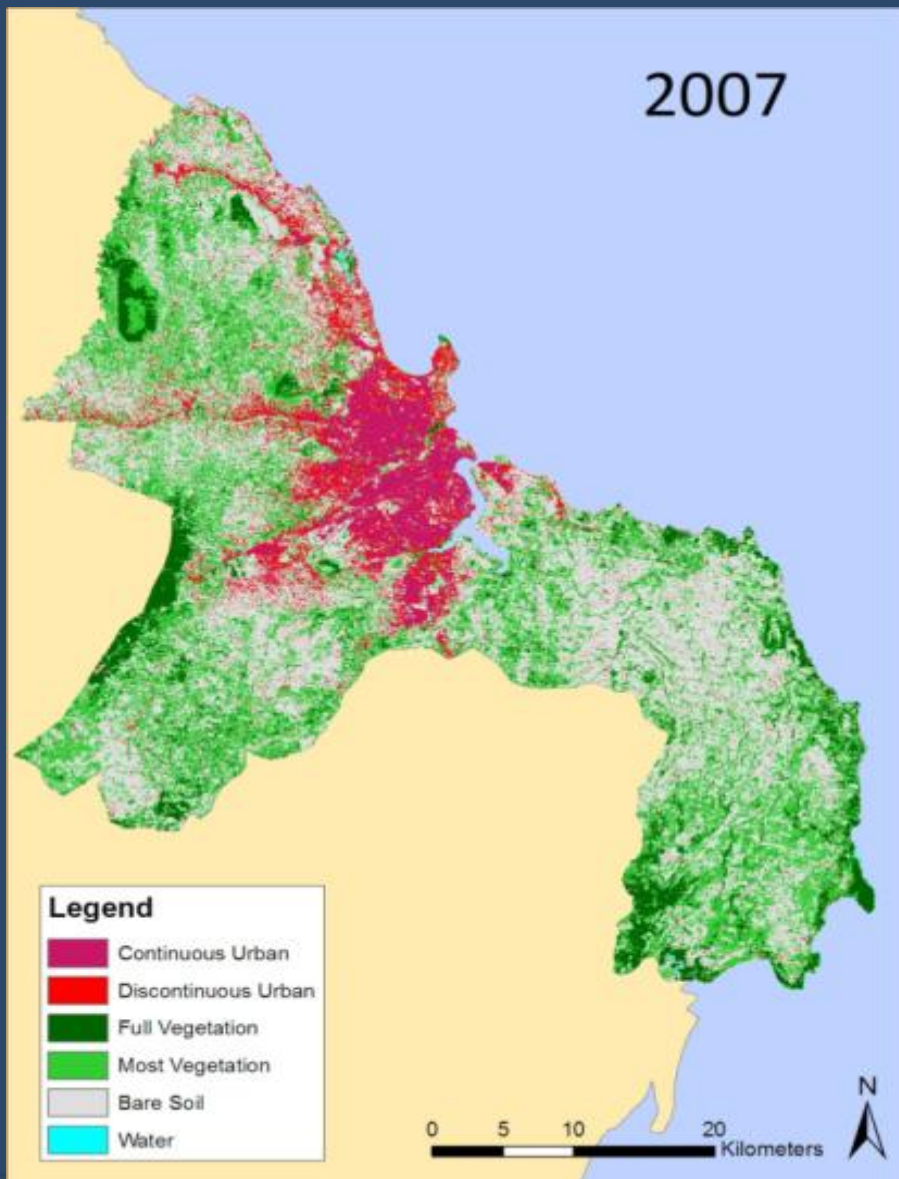
Temporal Land Cover Change



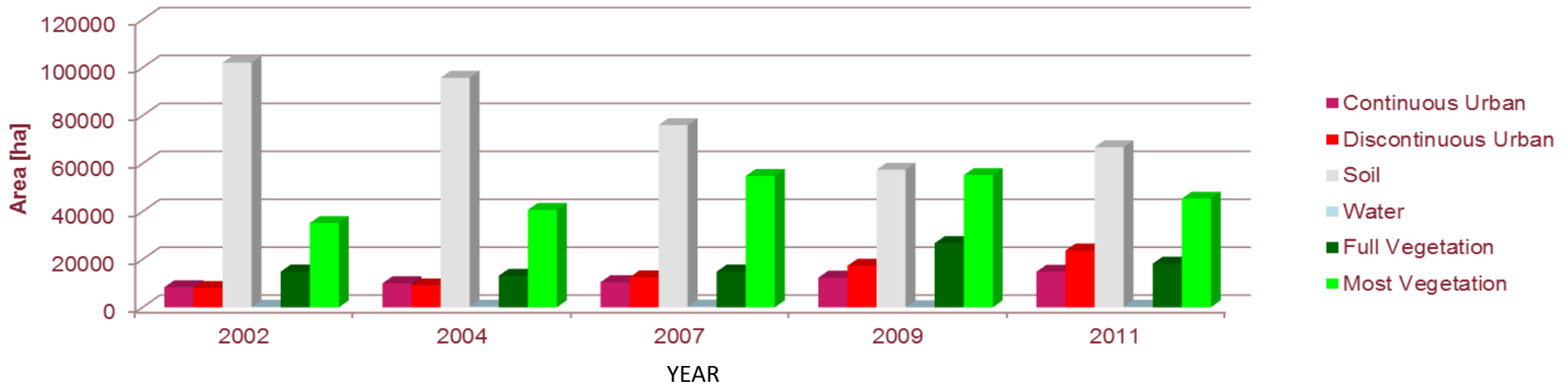
Land Cover Classification



Temporal Land Cover Change



Land Cover Classification



Recommendation

- Urban growth monitoring can assist enforcement of land use planning
- Early warning of new settlements located in flood prone areas
- Assist municipalities in Dar es Salaam in implementing and controlling landuse zoning



Asanteni Sana!

Dionis Rugai
Disaster Management Training Centre and
Department of Environmental Science and Management
Ardhi University, Dar es Salaam, Tanzania